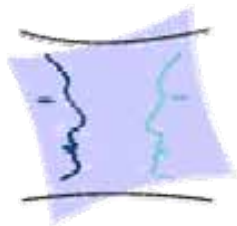


# Web Services as Building Blocks for Context-Aware Applications



Gerhard Austaller

[gerhard@tk.informatik.tu-darmstadt.de](mailto:gerhard@tk.informatik.tu-darmstadt.de)

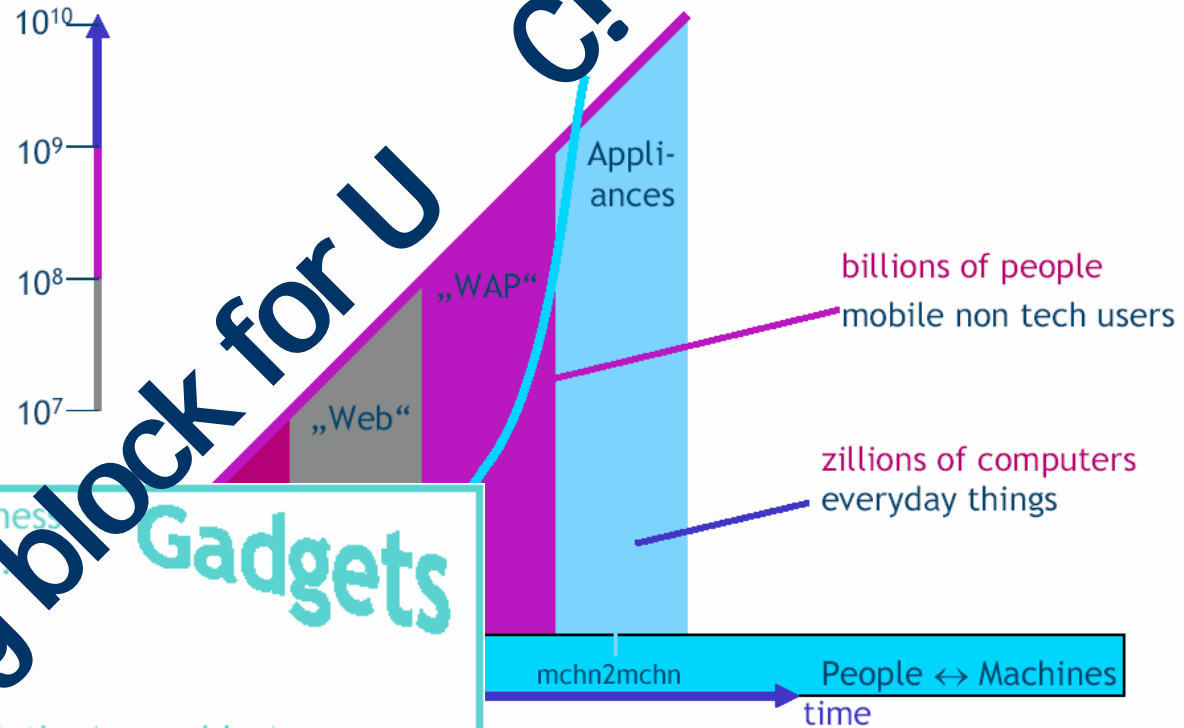
Darmstadt University of Technology, Telecooperation

[www.tk.informatik.tu-darmstadt.de](http://www.tk.informatik.tu-darmstadt.de)

# Context in (Mobile) Computing

## UC Facts: Internet Growth

- UC world:
- autonomous...
  - ...action
  - no „interface“



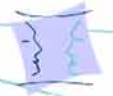
location / time / temp./... awareness  
ambient walls / offices / homes / ...  
augmented reality  
pico / ad-hoc networks  
Internet appliances  
smart labels - badges - devices, cloths (wearables)  
smart cars (/WebOn/... (things)) - goods & spaces - paper ... dust

### ADAPTABILITY

- wrt. „sensed“ context (smart, ambient, location++ - aware)
- wrt. „computed“ context (device- / user- / activity- awareness)

# Context in (Mobile) Computing

- Goal:
  - Applications, environments... that reduce cognitive load on users to fulfil a task?
- How:
  - Restore environment of room depending on participants (login and load slides,...)
  - Turn device on/off, filter incoming messages depending on location, time, situation (lecture, cinema, meeting,...)
  - Automated filling-in of forms (location, time in HEAG timetable)
  - Present information depending on output device
  - ...



# What is context?

- Context (Dey):  
Context is **any information** that can be used to **characterize the situation of an entity**. An entity is a **person, place or object** that is considered **relevant** to the interaction between a user and an application, including the user and application themselves.
- Context-Awareness:  
A system is context-aware if it uses context to **provide relevant information and/or services to the user**, where relevancy depends on the user's task.
- Kontext (Schmidt/Gellersen):  
**Abstrakte Beschreibung** der Situation oder von **signifikanten Merkmalen** der Situation in der lokalen Umgebung eines Benutzers.
- System mit Kontextbezug:  
Ein System das die Fähigkeit hat Aspekte der Umgebung als Kontext zu erfassen und diese für ein **situatives Verhalten** zu nutzen.

# Motivation - Scenario

[kolloquium] Einladung zum Kolloquium am 5.8.2002 - Termin

Termin Terminplanung

Betreff: [kolloquium] Einladung zum Kolloquium am 5.8.2002

Ort: Raum S1 15/133

Beginnt um: Mo 05.08.2002 16:15  Ganztägig

Endet um: Mo 05.08.2002 17:45

Erinnerung: **dynamisch** Anzeigen als:  Mit Vorbehalt

RMV.DE - Microsoft Internet Explorer

Fahrplanauskunft

von Ort/Stadt Darmstadt Haltestelle Alexanderstraße

nach Ort/Stadt Darmstadt Haltestelle Luisenplatz

Datum 05 08 02

Uhrzeit 16 15

Abfahrt  Ankunft

MEHR OPTIONEN >>>

ABFRAGEN >>>



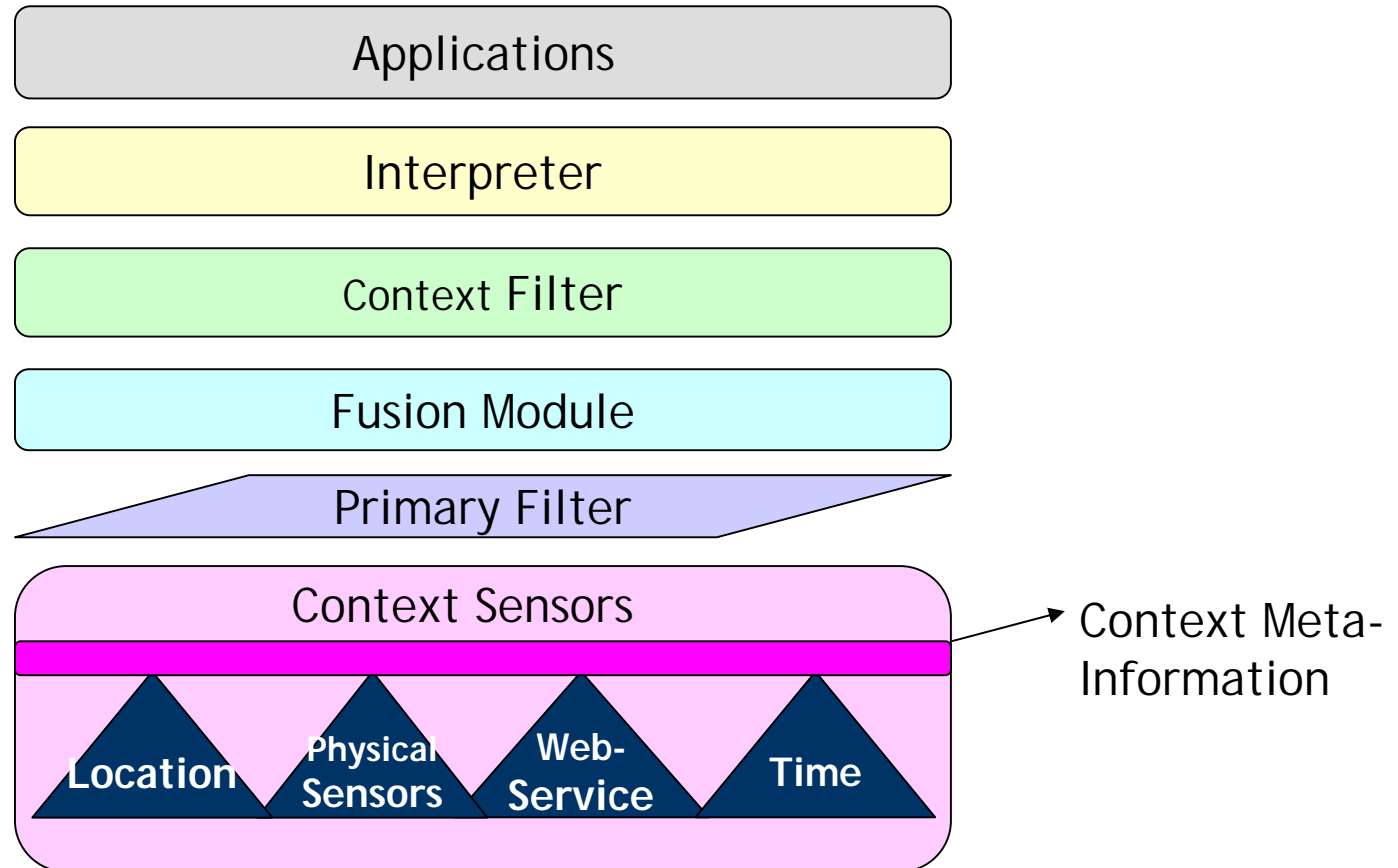
2. Darmstadt Alexanderstraße/TU	<input checked="" type="checkbox"/>	Mo.05.08.	ab 16:06	00:04
Darmstadt Luisenplatz			an 16:10	

29.06.2004

# Research Objectives

- Context Representation and Retrieval System
  - Still most times physical sensor paradigm, but **more complex context** is needed
- Context Data Fusion, Filtering, Interpretation, Prediction
  - Several sensors represent one context
  - Person enters/leaves a room
  - People on one place, noise level -> meeting, lesson
  - What's the next room a person will go into

# General Model For Context Aware Systems



# Building Blocks



RMV-Time-table

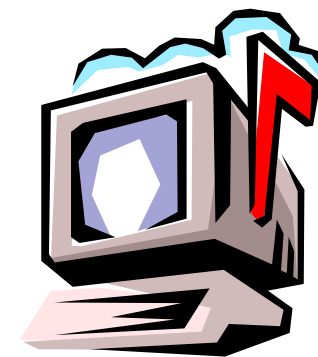
Exchange Server

29.06.2004

Cellular Phone



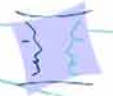
O2-Handyfinder



Nokia D211



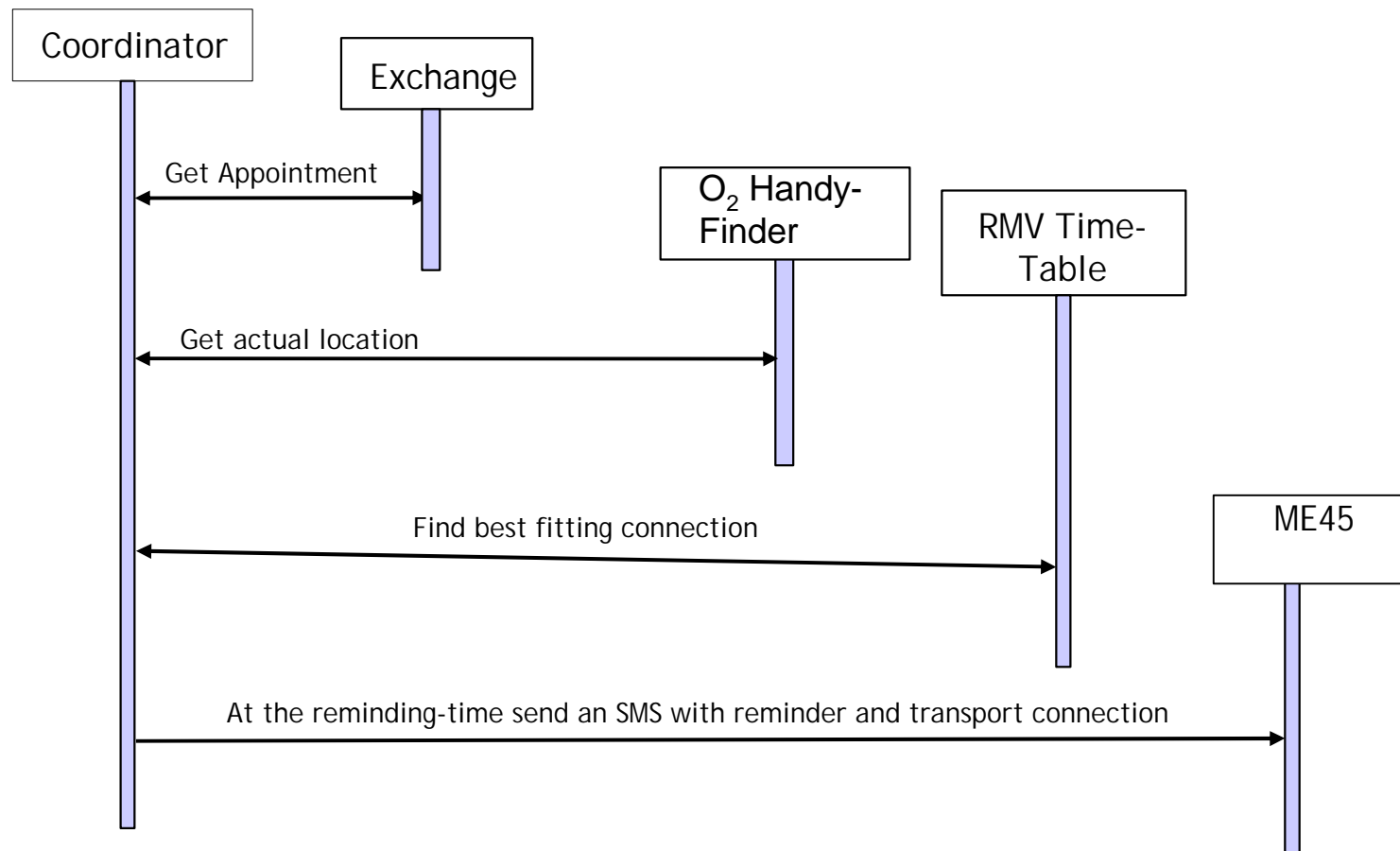
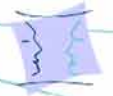




# Application of our Model

Application	Automatic reminder with public transport connections
Interpreter	Logic
Context Filter	Significant context change
Fusion Module	Translation of formats
Primary Filter	Frequency of requests
Context Sensors	O <sub>2</sub> Location Service, Exchange, RMV, Time

# Logic Sequence Diagram



# Hurry Up!



# Concerns

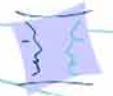
- Privacy:
  - Who gets information about my current context?
    - Location based services need my location to process but I don't want them to be able to track me.
    - I don't want my boss to know how much time I spend per day in the coffee kitchen.



RFID  
Spiegel Nr. 31 / 2003

# Discussion

- Are Web Services a suitable technology for UC/CTX?
- Yes...
  - Broad support for tools by industry
  - Much effort put into standards
  - “Managers like Web Services”
- ...but...
  - Hardly any free Web Service available (amazon, google, ...)
    - No benefit for provider → micropayment
  - Will there be standards (interfaces) for everything?
  - How to find services?
  - Too heavy-weight (in some scenarios)
  - Applications interested in changes → push needed



Thanks for your attention!